



VIBRATION TESTING

OUR EQUIPMENT. YOUR SUCCESS.

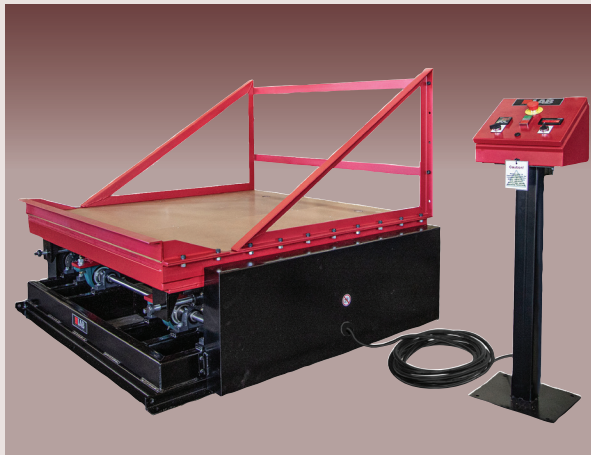
V-SERIES™ TRANSPORTATION SIMULATOR

L.A.B. Equipment, Inc.'s, V-Series™ Transportation Simulators are used to determine the ability of packages and products to withstand shock and vibration encountered during the typical transport environment. Our transportation simulators use three methods of motion; rotary or circular synchronous motion, vertical linear motion and non-synchronous motion to provide you with the tools you need to meet your specific requirements.

Applicable Test Standard Compliance

- ISTA 1A, 1B, 1C, 1D, 1E, 2A, 2B
- ASTM D999
- ISO 2247
- Mil Std 810G
- TAPPI, JIS, UN, Fed Std 101

Other corporate specific, internationally and industry recognized standards.



Model V1250-shown

V-SERIES™ FEATURES

- Adjustable frequency
- Rotary synchronous motion
- Vertical linear motion available (V400 and larger)
- Non-synchronous motion available (V400 and larger)
- Replaceable decking for realistic simulation and excellent wear resistance
- Accommodates large and small test payloads
- Easy installation and low maintenance
- Each system comes standard with containment fencing sufficient for loose load transportation simulation
- Designed to meet above noted performance standards



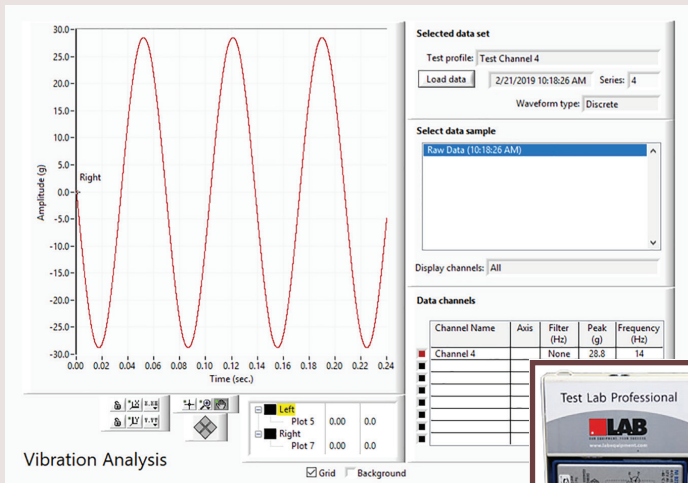
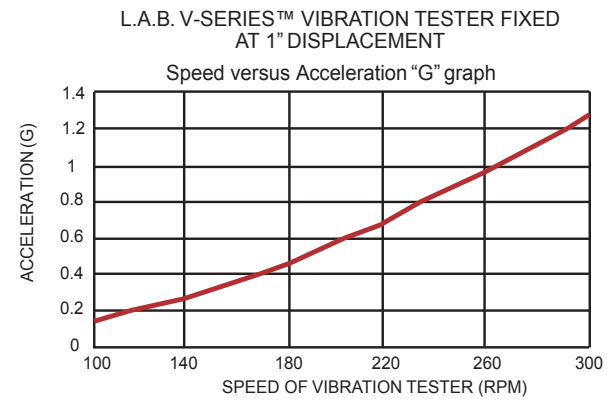
Model V250-shown



- User friendly controls
- Built in timer and safety functions
- Pedestal mounted for versatile orientation

MECHANICAL VIBRATION

- Fixed Displacement of 1" (25 mm)
- Maximum Acceleration of 1.25 g
- Frequency 2-5hz (120-300RPM)
- CE Compliant
- Rotary synchronous motion (Standard)
- Vertical linear motion (Optional)
- Non-synchronous motion (Optional)
- Oversized and special sized tables



Need To Monitor Your Testing? Test Lab Professional™

- Professional grade data acquisition and analysis system
- Up to 4 channels
- Sample rate as high as 51.2 kS/s/chan
- Acceleration as high as 5G
- 24 Bit ADC
- Multi-tool data manipulation
- See LAB's TestLab Professional™ brochure for more detail

Model	V250	V400	V1250	V2000	V4000	V6000	V8000
Payload Capacity	250 lbs. (113 kg)	400 lbs. (181 kg)	1250 lbs. (567 kg)	2000 lbs. (907 kg)	4000 lbs. (1814 kg)	6000 lbs. (2722 kg)	8000 lbs. (3628 kg)
* Table Size (W x L)	36x42 in (910x1070 mm)	48x48 in (1220x1220 mm)	60x60 in (1520x1520 mm)	60x60 in (1520x1520 mm)	60x60 in (1520x1520 mm)	60x60 in (1520x1520 mm)	96x96 in (2438x2438 mm)
Table Height (approximate)	18 in (462 mm)	19 in (480 mm)	22 in (560 mm)	22 in (560 mm)	23 in (580 mm)	26 in (660 mm)	28 in (710 mm)
Max Acceleration	1.25 G	1.25 G	1.25 G	1.25 G	1.25 G	1.25 G	1.25 G
Frequency Range	2-5 Hz (120 - 300 rpm)	2-5 Hz (120 - 300 rpm)	2-5 Hz (120 - 300 rpm)	2-5 Hz (120 - 300 rpm)	2-5 Hz (120 - 300 rpm)	2-5 Hz (120 - 300 rpm)	2-5 Hz (120 - 300 rpm)
Displacement	1 in (25 mm) Fixed	1 in (25 mm) Fixed	1 in (25 mm) Fixed	1 in (25 mm) Fixed	1 in (25 mm) Fixed	1 in (25 mm) Fixed	1 in (25 mm) Fixed
Rotary Motion	Standard	Standard	Standard	Standard	Standard	Standard	Standard
Vertical Linear Motion	NA	Optional	Optional	Optional	Optional	Optional	Optional
Non-Synchronous Motion	NA	Optional	Optional	Optional	Optional	Optional	Optional
Utility Requirements	100-130 VAC or 200-230V - 1 phase/50 or 60Hz		230/460VAC/3 phase/60Hz or 380/3 phase/50Hz				
Approx. Shipping Weight	700 lbs. (317.5 kg)	1215 lbs. (551 kg)	2000 lbs. (907 kg)	2400 lbs. (1089 kg)	3150 lbs. (1429 kg)	3410 lbs. (1547 kg)	6285 lbs. (2850 kg)
* Machine Dimensions (With Product Fences)	42x40x33.25 (1067x1016x844 mm)	52x52x38 in (1321x1321x960 mm)	71x67x55 in (1803x1702x1346 mm)				98x98x81 in (2489x2489x2057 mm)
Control Stand Dimensions	12x12x45 in (305x305x1143 mm)						
Applicable Standards	ISTA-1A, 1B, 1C, 1D, 2A, 2B, 6-FedEx-A, 6-FedEx-B; ASTM-D999; ISO-2247; MIL-STD-810G; FED-101; and other international and industry recognized standards						

* See Product Manual, Installation Guide or please consult your L.A.B. sales representative for more dimensional detail or if specific shipping dimensions are needed. Machine dimensions, weight and other specifications listed are for reference purposes and are subject to change

Due to our continuous commitment to product development, the above specifications and features may be modified without notice.